



SUNSEEKER 37M 2009/2023

|

\$ 7,950,000_{EX VAT}



The Yacht



The Yacht



The Yacht



The Yacht



Beach Club



Beach Club



Bow



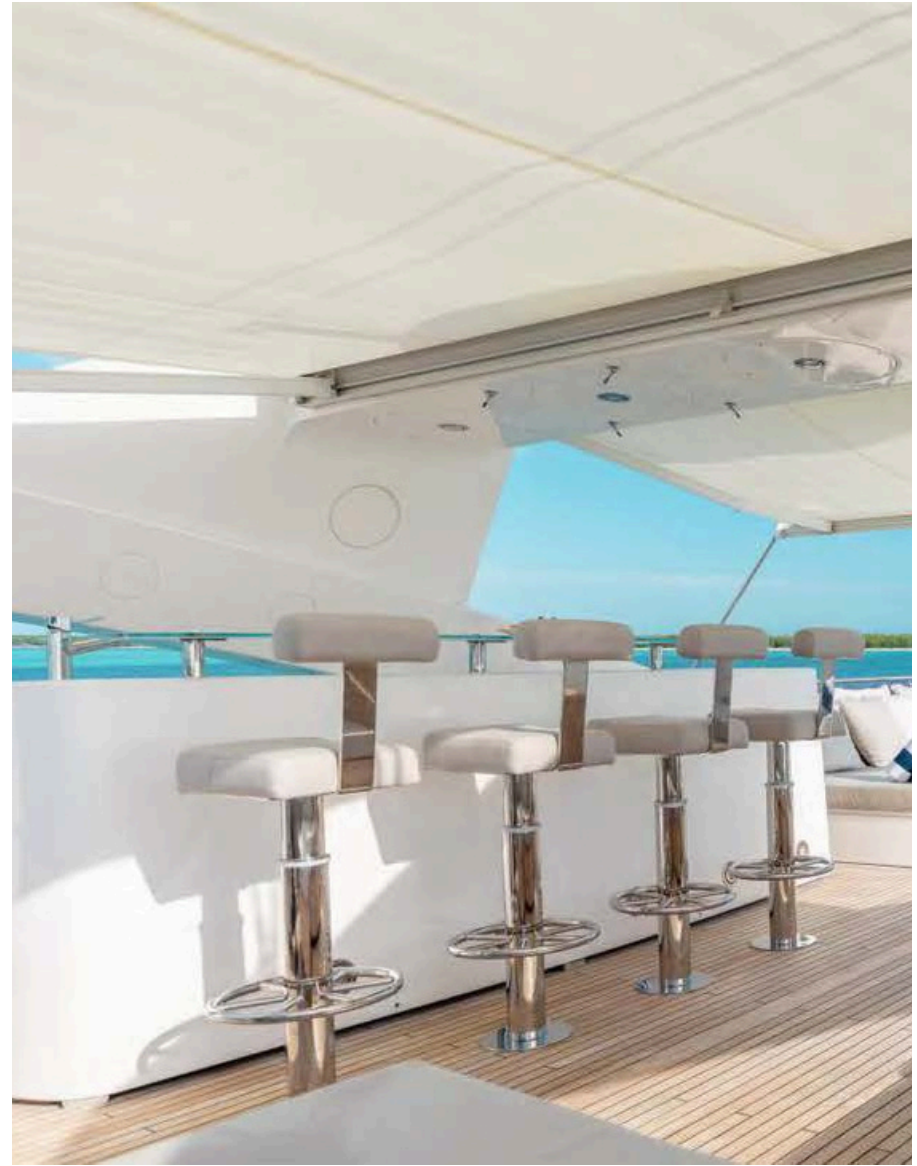
Flybridge



Flybridge



Flybridge



Flybridge



Flybridge



Upper Deck



Upper Deck



Upper Deck
saloon



Cockpit



Helm Station



Saloon



Saloon



Saloon



Dining area



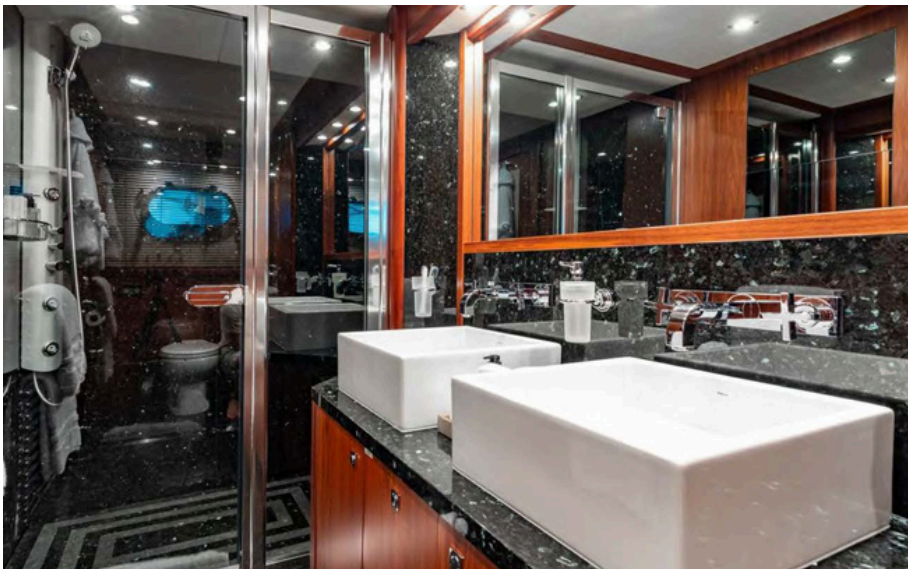
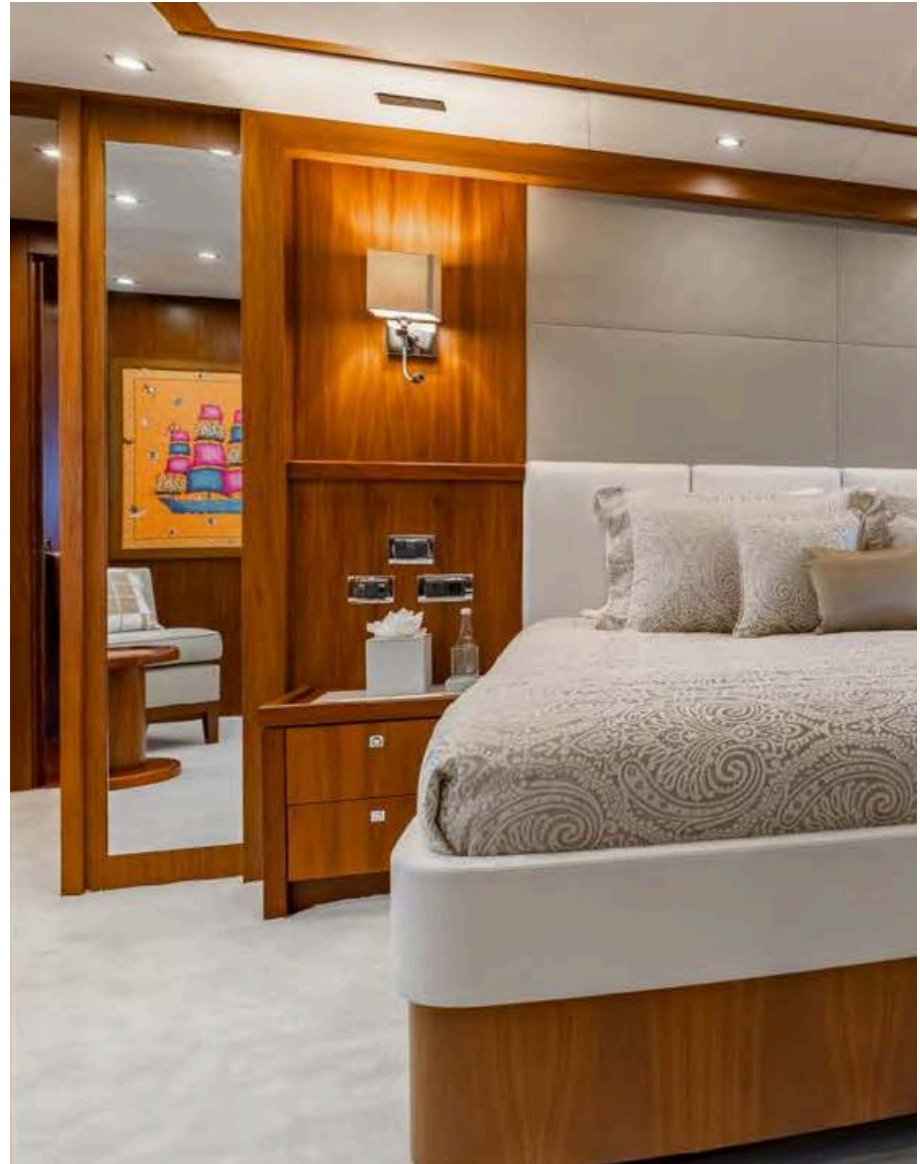
Dining area



Master Cabin



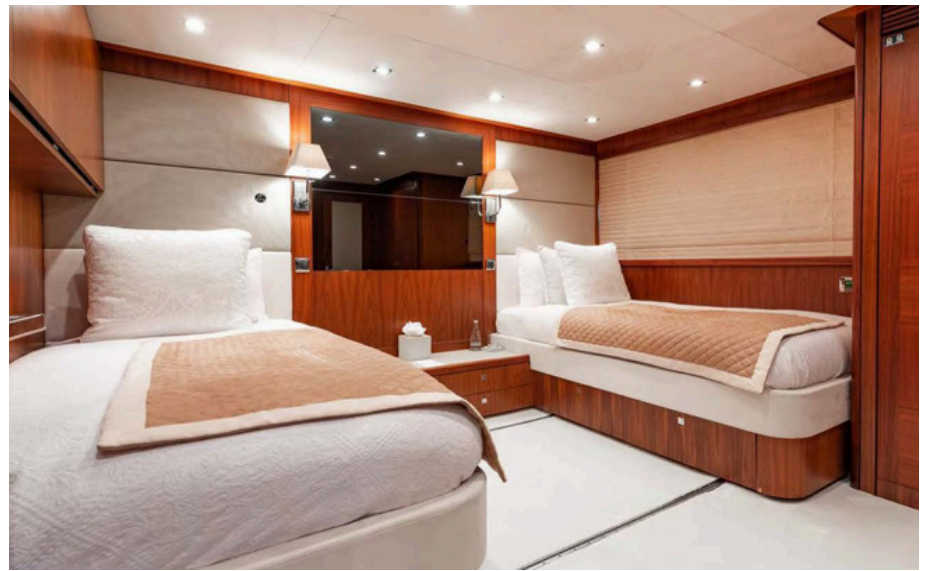
Master Cabin



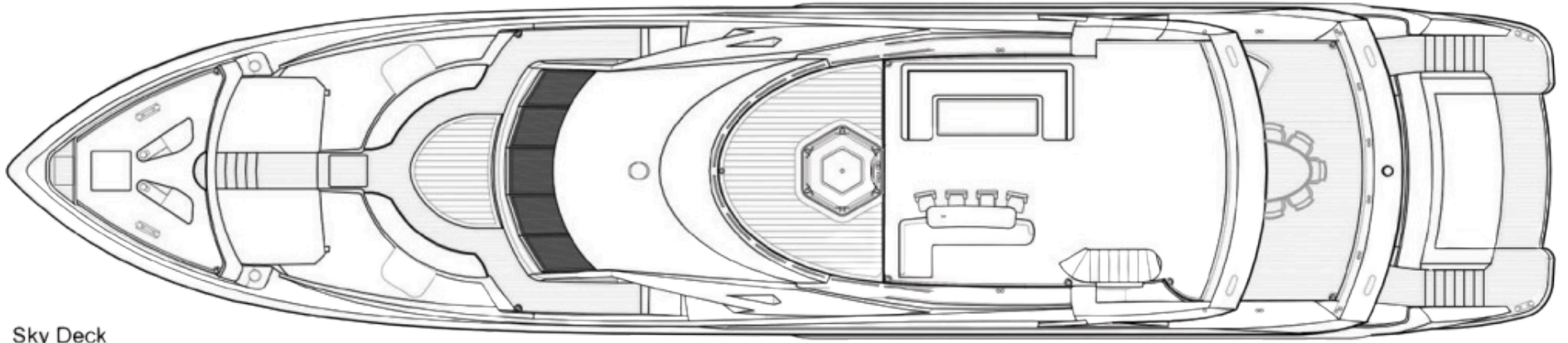
Master Cabin



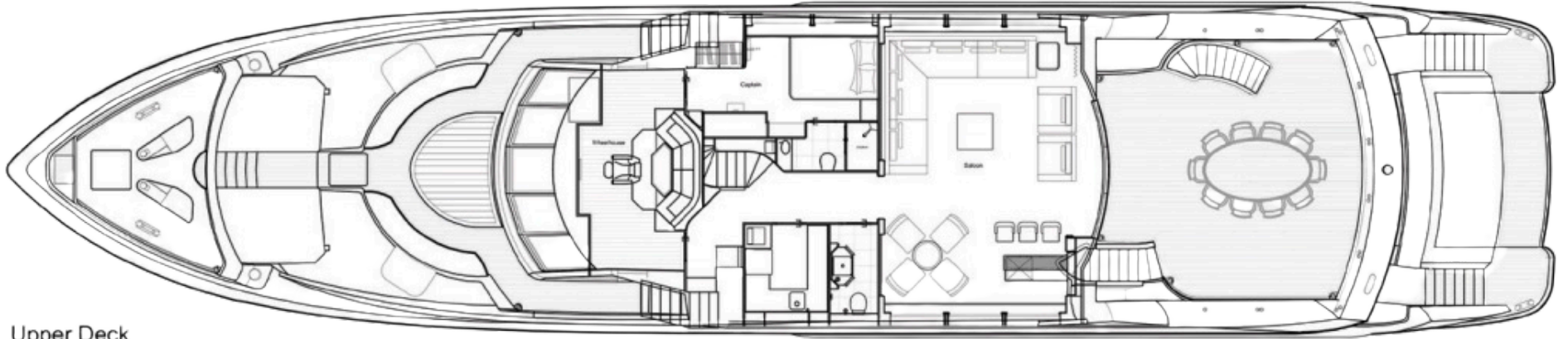
Double Guest
Cabins



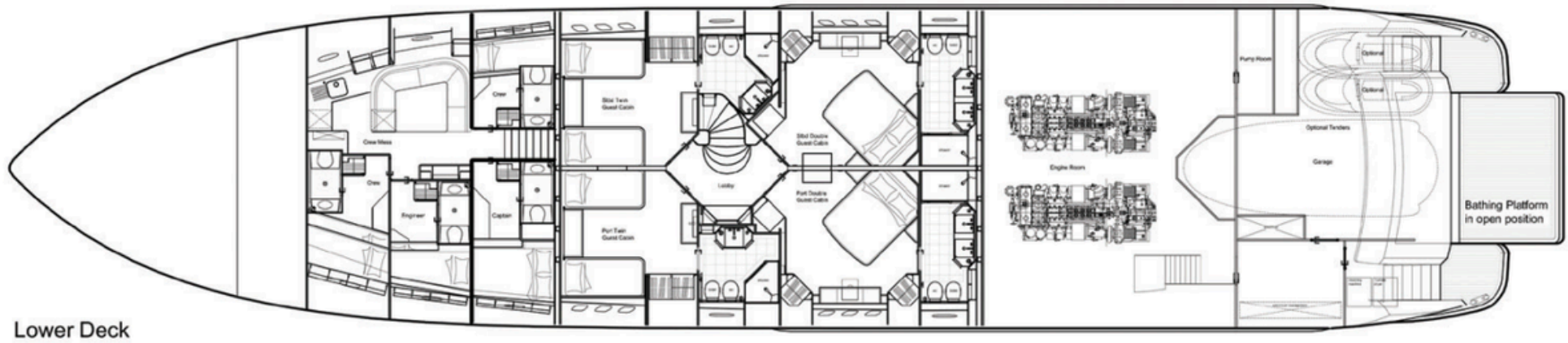
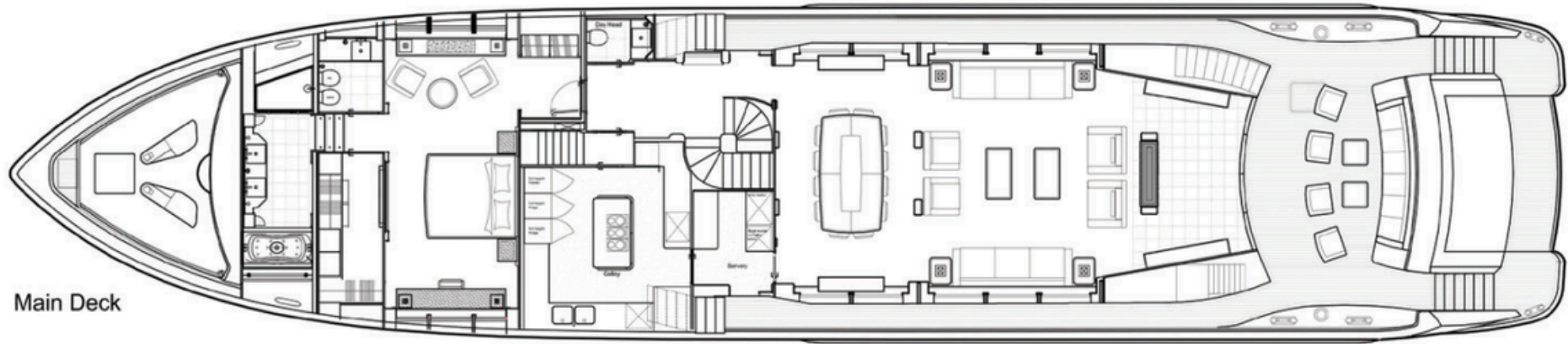
Twin Guest
Cabins



Sky Deck



Upper Deck



Layout

SPECIFICATIONS:

LOA: 36.88 m

Beam: 7.88 m

Draft: 2.25 m

Gross Tonnage: 331 t

Cruising speed: 16 kn

Max speed 22 kn

Interior design: Sunseeker / Baldwin Harris

Naval Architect: Sunseeker

Hull construction: Composite

Hull configuration: Planing

Classification: RINA

Flag: Montego Bay

ACCOMMODATIONS:

Cabins: 6 (1 master,
3 double, 2 twin)

Guests: 12

Crew: 8

ENGINES:

2x MTU Friedrichshafen GMBH, 12V 4000 M90

TENDERS & TOYS

- 2x Sea doo Spark
- 3x Sea bob Fs5
- 4x Electric Scooters
- 2x Paddleboards Noodles
- 2x Towable Tubes
- 3x Inflatable Platforms
- Snorkel Gear
- Complete Beach Setup with tent
- Complete Swim Platform Setup
- Stationary Bike
- Dumbbells with Adjustable Weight
- Bands & Kettle Balls

SPECIAL FEATURES

- Jacuzzi on the sundeck surrounded by sun pads
- On-deck master stateroom
- Sky lounge equipped with bar
- Sundeck with bar and chaise lounge chairs for sunbathing

ADDITIONAL EXTRAS

- Additional storage unit with fiddle edge between mid-columns
- Additional/upgraded sound insulation between Galley and Master Stateroom bulkhead including REVAC
- AHDC Air handlers
- Air Conditioning
- additional high-definition DVD player with HDMI connection(in Master, Saloons Aft Cockpits)
- All guests shower cubicle bulkheads in Emerald Pearl
- Anchor chain lengths -180 meters per side
- Built in exterior TV on forward starboard side
- Central three Wheelhouse displays -19 Hatteland
- Cleaning tracks fitted for Upper Deck Saloon and Main Deck Master Stateroom exterior windows

ADDITIONAL EXTRAS

- Commercial type extraction in the Galley
- Custom Refrigeration in Main Galley 1800 liters fridge capacity, 800 liters freezer capacity
- Deck Saloon Bar Fridge Sub Zero type
- Dive compressor (Bauer Junior II E 3 Y)
- Double AC socket at forward end beside each aft sideboard console in the Main Deck Saloon
- FLIR Voyager thermal imaging camera
- Forward facing echo sounder (on different frequency)
- Forward long-range fuel tank 5630 liters
- Frequency converter
- Fridge Sub Zero in the Upper Deck Servery
- Fuel cleaning centrifuge (single unit)
- Furuno FE 700 Echo Sounder located as far aft as possible (for slow speed navigation)
- Grease food waste collector fitted in galley
- Heated towel rail in all guest en suites
- Hydraulics Stabilization while underway and at anchor
- Hydraulics Stern thruster Hydraulic 65 hp

ADDITIONAL EXTRAS

- Inboard berth on sliding track system to allow berths to convert to double berth when required in the Starboard
- Infra-red warming lamps on aft bulkhead in the Galley
- Joystick type steering control in helm seat port side armrest in addition to ship's wheel
- KVH V 7 mini-V Sat system (in Dummy Sea Tel 4004 dome) connected to onboard data points, plus wireless access for four exterior guest areas, and all interior areas.
- Built in network printer/fax/copier/scanner in Wheelhouse
- Manual blackout roller blinds 100 blackout
- Miele Professional Washing machine
- Tumble dryer
- Dishwasher
- MPA Monitoring CCTV system with four cameras and dedicated display in crew mess connected to Tisseen system
- MPA Monitoring Generator Control and Monitoring System
- Octo Marine Compact water conditioner for shore fresh water supply
- Passarella Upgrade Stainless Steel Finish

ADDITIONAL EXTRAS

- Pullman berth inboard bulkhead in the Starboard Forward Twin Guest Stateroom
- Retractable Electric Sun Awning for Skydeck Bar Area (aft facing Navy Blue Canvas)
- Retractable Electric Sun Awning for Skydeck Bar Area (facing forward Navy Blue Canvas)
- Saloons and all guest cabins to have I Pod docking stations
- SeaTel 4004 satellite TV system with decoder to take either NileSat or Hotbird decoder cards
- Second generator PTO
- Second helm seat
- Second radar system (Furuno NavNet)
- Sewage treatment plant
- Sliding berth arrangement to allow starboard side berth to slide outboard to create single
- Teak Skydeck
- Trailing for engines, providing ability to run on one engine if necessary

ADDITIONAL EXTRAS

- Trash compactor in the Galley
- Ultrasonic wind system connected to Central Navigation Display
- 9 x Underwater lights(Ocean LED)
- Upper berth in the Captain's Cabin (Lower Deck Aft Port)
- Water misting system with outlets on underside of radar arch
- Wheelhouse speakers to run off CD/Radio in Wheelhouse with fixed waterproof exterior remote
- Wing station controls each outboard side of wheelhouse deck
- Workshop compressor fitted in the Engine Room

DISCLAIMER

All speeds, measurements, capacities, consumptions, etc. may be approximate or estimated. Specifications provided for information only. Data was obtained from sources believed to be reliable and is not guaranteed by owner or brokers. Buyer assumes the responsibility to ascertain the correctness of all data contained herein and otherwise provided and must instruct his agent and surveyors to confirm all details for accuracy prior to purchase. Subject to prior sale, price and inventory change, or withdrawal from market without notice.