



AZIMUT S8

Built: 2024

Model: 2025

€ 3,900,000 EX VAT

The Yacht



The Yacht



## The Yacht



Bow



Bow



Bow



Bow



Bow



Flybridge



Flybridge



Flybridge



Stern



Cockpit



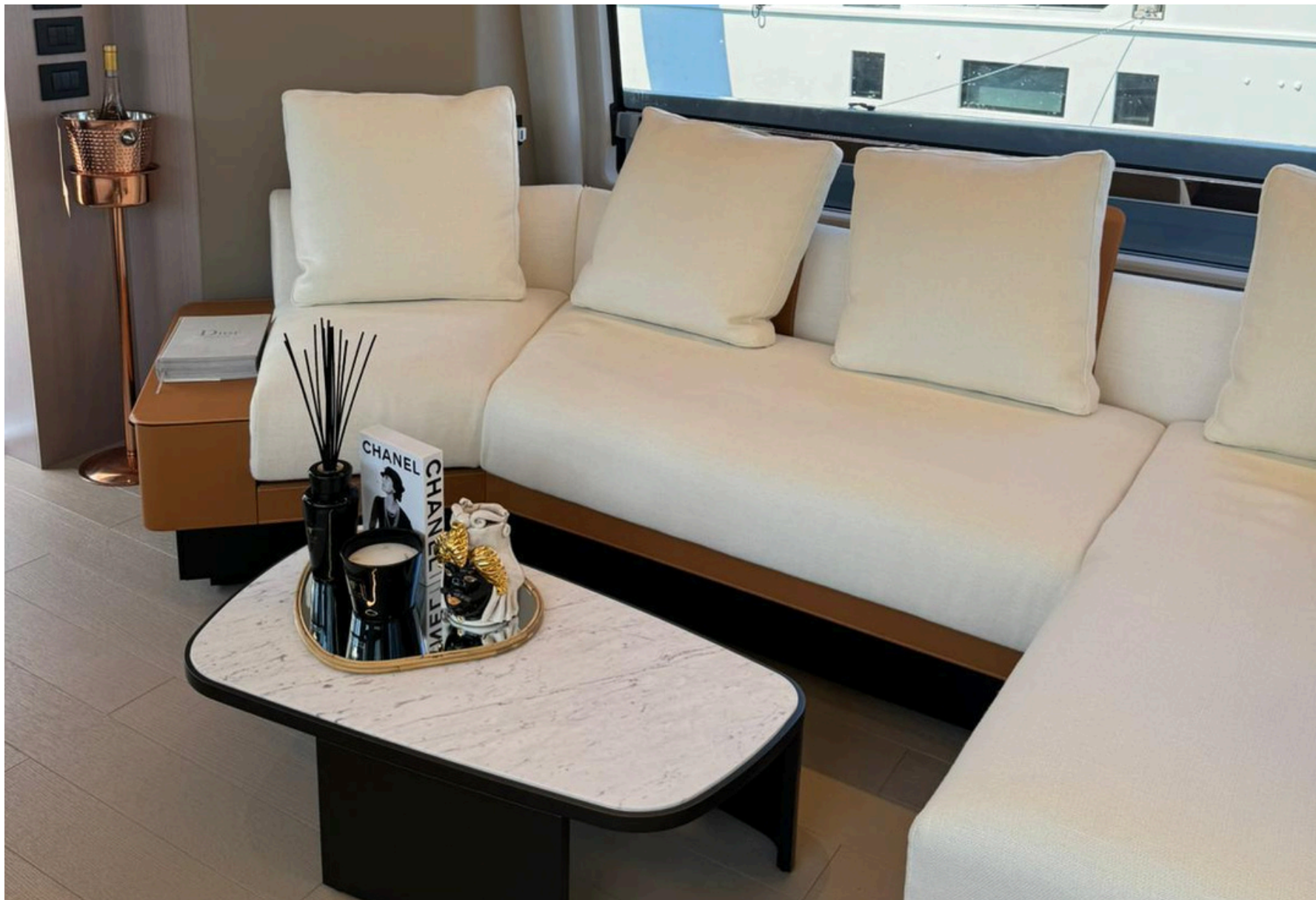
Cockpit



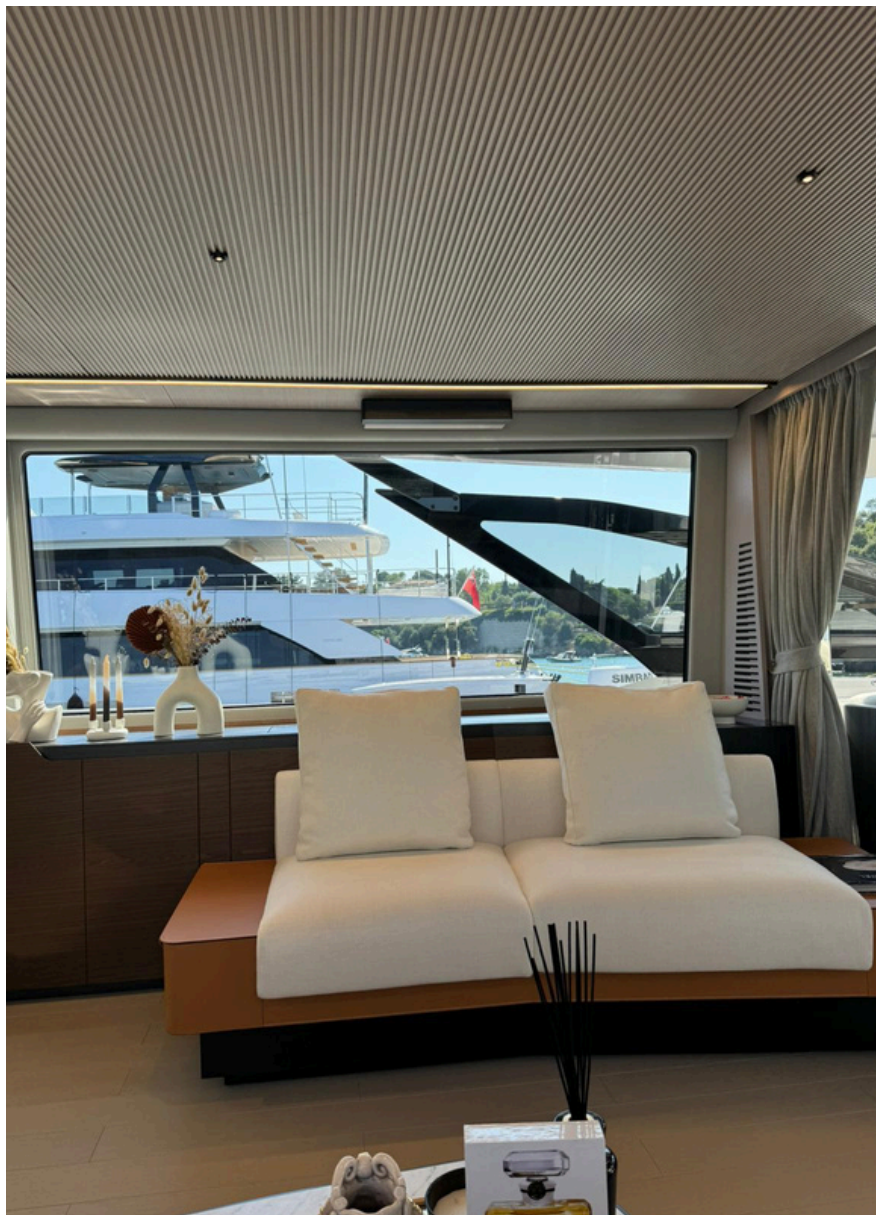
# Cockpit



Saloon



Saloon



Dining Area



Galley



Master Cabin



Master cabin



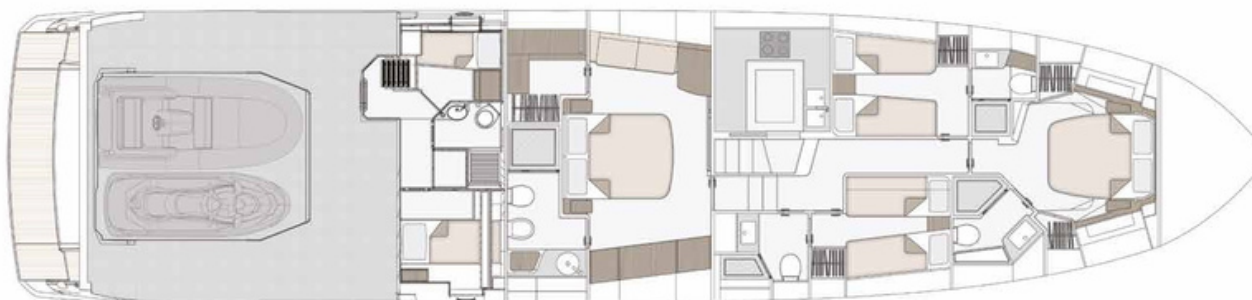
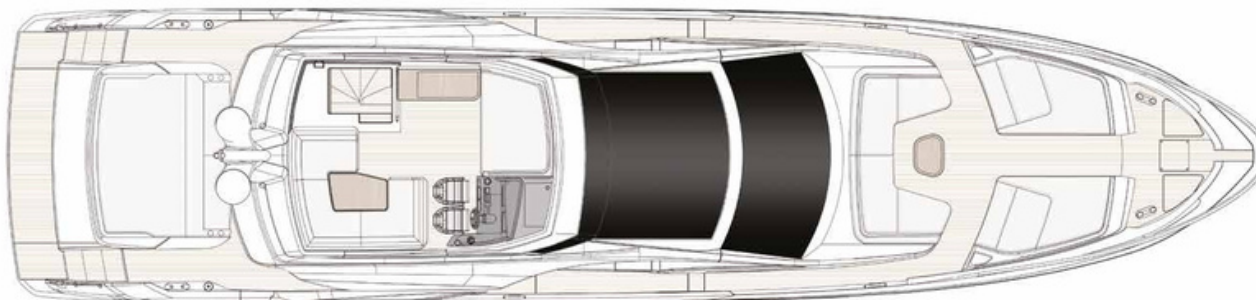
VIP cabin & Bath



Guest cabins



# Layout



## Specs

### **SPECIFICATIONS:**

Maximum Length: 24.63 m

Waterline Length: 20.17 m

Max. Beam: 5.55 m

Max. Draught: 1.75 m

Displacement (loaded): 57.68 t

Passenger capacity: 16 people

Hull designer: Pierluigi Ausonio

Exterior designer: Mancini Designe

Interior designer: Yachtique

Material: GRP + CARBON

Fuel tank capacity: 4000 l

Fresh water capacity: 1100 l

Black water capacity: 415 l

Gray water capacity: 450 l

### **PERFORMANCE**

**Engines:** 3 x VOLVO D13 IPS1350 1000 Mhp

Max. Speed: 34kn

Cruising Speed: 28kn

Range at cruising speed: 260 nmi

### **ACCOMODATION**

**Cabins:** 4 + 1 crew

**Beds:** 8 + 2 crew

**Heads:** 4 + 1 crew

### **MAIN SYSTEMS:**

-WATCHIT anti grounding system

-Additional generator

-Extra conduits

-Seakeeper stabilizer 18

-Watermaker 180 l/h

## Specs

### **EXTERIOR:**

- 2 x Underwater lights on transom
- Additional cleats in midship
- Aft sunbathing cushions with adjustable backrest
- Backrest for sunbathing cushion on bow flybridge
- Cockpit table with carbon finishing top
- Electric searchlight with additional control
- Flagpole
- Flybridge furniture including sink, barbecue, refrigerator and icemaker
- Hauling/launching system for tender and jet-ski
- Sofa on aft flybridge in Batyline fabric with hi-lo table convertible into sunbed
- Sunbathing cushions on bow with adjustable backrest
- Table on bow with carbon finishing top
- Teak on flybridge deck and bow area
- Telescopic gangway
- Bimini on flybridge
- Cockpit chairs
- Cover for garage door
- Sunshade sail on bow pools

## Specs

### **INTERIOR:**

- Additional folding bed in crew cabin
- Additional folding bed in starboard guest cabin
- Copilot seat at main helm
- Dimmer lights in lower deck
- Electric blackout blind for glass roof in main deck
- Organized storage area under galley floor
- Toilet with bidet faucet feature in guest heads
- Toilet with bidet faucet feature in master head
- Toilet with bidet faucet feature in VIP head
- Wooden floor on main deck and stairs to lower deck
- Safe in master cabin

### **APPLIENCES:**

- Dishwasher
- Refrigerator and icemaker in cockpit furniture
- Refrigerator and microwave oven in crew area (port side)
- Salon bar furniture with sink, refrigerator and icemaker
- Winecooler for storage under galley floor

### **ELECTRONICS:**

- Garmin AIS 800
- GARMIN Gold package
- Naviop upgraded package

### **VIDEO – TV – HI-FI**

- Smart audio video + TV in VIP cabin
- Hi-lo mechanism for TV in saloon

## Disclaimer

All speeds, measurements, capacities, consumptions, etc. may be approximate or estimated. Specifications provided for information only. Data was obtained from sources believed to be reliable and is not guaranteed by owner or brokers. Buyer assumes the responsibility to ascertain the correctness of all data contained herein and otherwise provided and must instruct his agent and surveyors to confirm all details for accuracy prior to purchase. Subject to prior sale, price and inventory change, or withdrawal from market without notice.